

Houston Office
248 McCarty Dr.
P.O. Box 15214
Houston TX, 77220-5214
(713) 672-8251
Fax (713) 672-6336
Email clemtex@clemtex.com

1-800-CLEMTEX
www.clemtex.com

Corpus Christi Branch
4750 Westway
P.O. Box 5036
Corpus Christi, TX 78465
(361) 882-8282
Fax (361) 882-6029

Dallas Branch
4770 Gretna
Dallas, TX 75207
(214) 631-0584
Fax (214) 631-5824
1-800-BLAST 97

Sentinel Media Metering Valve

Replacement Valves

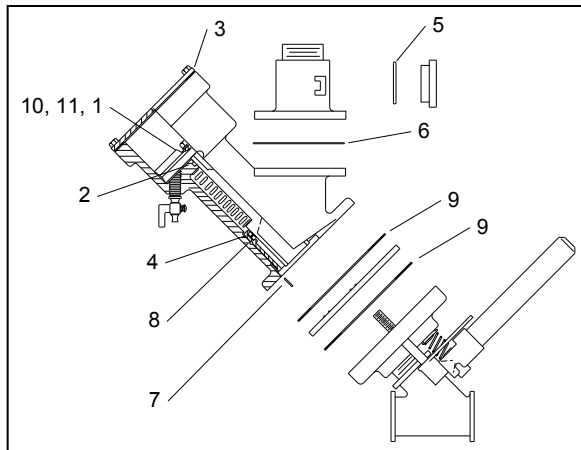
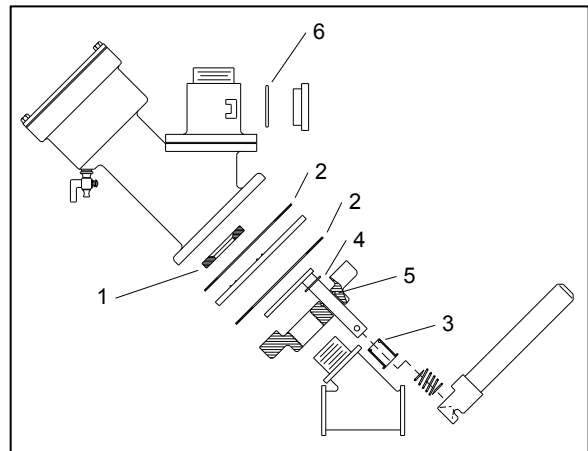
- (-) Sentinel valve with attached ACS, standard-use for abrasives coarser than 50-mesh,
 - with inspection plate20508
 - without inspection opening20509
- (-) Sentinel valve, w/o attached ACS, standard-use for abrasives coarser than 50-mesh,
 - with inspection plate20608
 - without inspection opening20609
- (-) Sentinel valve w/o attached ACS, fine-mesh for abrasives 50-mesh and finer
 - with inspection plate21439

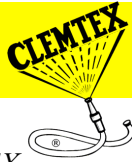
Service Kits – 22389 Lower Segment

- | Item | Qty. | Description |
|------|------|--|
| 1. | 1 | Seat, rubber |
| 2. | 2 | Gasket, seat plate |
| 3. | 1 | O-ring, gland, 5/8" ID nom. |
| 4. | 2 | Gasket, shaft
(One is for standard-use [coarse media] has a 1-3/8" nominal OD)
(One is for a urethane plate [fine-mesh] has a 1" nominal OD) |
| 5. | 1 | O-ring, lower body 1" ID |
| 6. | 1 | O-ring, Inspection plate, 1-3/4" OD nom. |

Service Kits – 22388 Upper Segment

- | Item | Qty. | Description |
|------|------|---|
| 1. | 1 | Washer, rubber backed |
| 2. | 1 | O-ring, piston shaft bore, 3/4" ID nom. |
| 3. | 1 | Gasket, cylinder cap |
| 4. | 2 | U-seal |
| 5. | 1 | O-ring, inspection plate 1-3/4" OD nom. |
| 6. | 1 | Gasket, flanged adaptor |
| 7. | 1 | Roll pin, 1/16" x 1/2" |
| 8. | 1 | O-ring, Main body, 2-1/4" nom. |
| 9. | 2 | Gasket, seat plate |
| 10. | 1 | Cap screw, 3/8-NC x 2" |
| 11. | 1 | Washer, 5/16" flat |





Houston Office
248 McCarty Dr.
P.O. Box 15214
Houston TX, 77220-5214
(713) 672-8251
Fax (713) 672-6336
Email clemtex@clemtex.com

1-800-CLEMTEX
www.clemtex.com

Corpus Christi Branch
4750 Westway
P.O. Box 5036
Corpus Christi, TX 78465
(361) 882-8282
Fax (361) 882-6029

Dallas Branch
4770 Gretna
Dallas, TX 75207
(214) 631-0584
Fax (214) 631-5824
1-800-BLAST 97

Replacement Parts

Item	Description	Stock No.
1.	Cylinder cap	20512
2.	Cap screw, 3/8-NC x 1-1/2"	03267
3.	Adaptor, 1/8" NPT	01940
4.	Piston cup	20515
5.	Piston, shut-off	20494
6.	Spring, 2" OD x 4-1/2"	20600
7.	Upper body	20514
8.	Cap screw, 5/16-NC x 3/4"	03151
9.	Wear sleeve	20495
10.	Seat plate	20497
11.	Metering plate and stem	
	Standard-use, coarser than 50-mesh	20499
	Fine-mesh, Urethane, 50-mesh & finer	21438
12.	Packing gland	21021
13.	Spring, 5/8" ID x 1-11/16"	01982
14.	Close nipple, 1-1/2" schedule 80	01791
15.	Inspection plate	02440
16.	Cap screw, 5/16-NC x 1-1/4"	19509
17.	Cap screw, 1/2-NC x 2-1/2"	03457
18.	Nut, 1/2-NC hex head	03511
19.	Metering handle, heavy duty	20498
20.	Pin, valve handle	20246
21.	Close nipple, 1-1/4"	01717
22.	Wye, 1-1/4" standard	01818
23.	Set screw, 1/4-NC SQ. HD.	03080
24.	Lower body	20511
25.	Flanged adaptor w/ inspection opening	20513
26.	Nut, 3/8-NC hex head	03311
27.	Nut, 5/16-NC wing	03213
28.	Flanged adaptor w/o inspection opening	20522
29.	Hitch pin	20245
30.	Petcock	01993
31.	Gauge unit	02433
32.	Stud, gauge unit	02436
33.	Spacer, handle bolt	02431
34.	Cap screw, 1/4-NC x 1"	03053
35.	Nut, 1/4-NC wing	03113
36.	Washer, 1/4 flat	03116
37.	Connector, 1/8" brass	01962
38.	Valve, 3-way ACS switch	07658
39.	Breather, muffler 1/8"	07657

